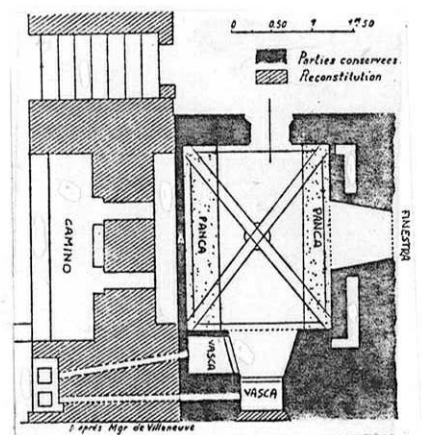




disegno di Hans Sebald Beham, "Spinnstube"  
Nürnberg, Germanisches Museum.

L'Etuve  
di Guéméné-sur-scorff

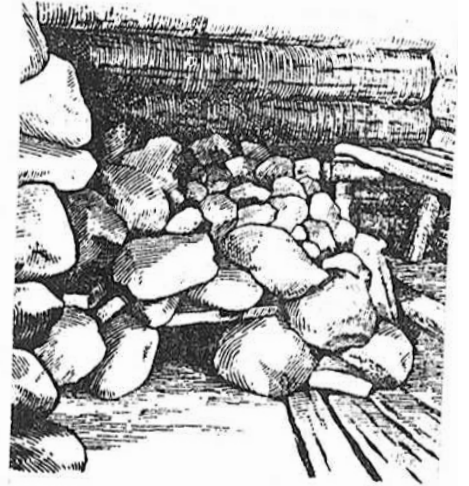
da: Aubert-Duhem





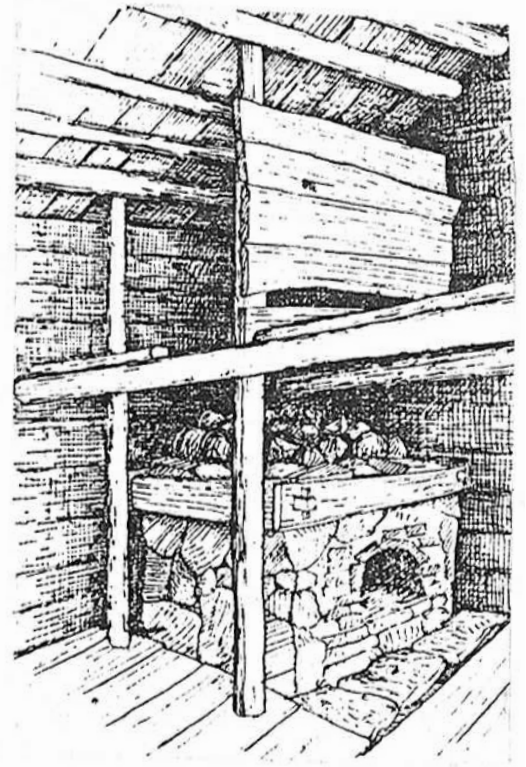
Estland (Estonia)  
Rauchofen

da: Talve, p.405



Riege (Finlandia)  
Rauchofen  
disegno di I.Talve e  
Pentti

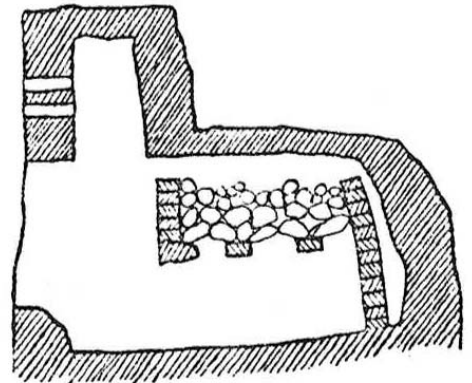
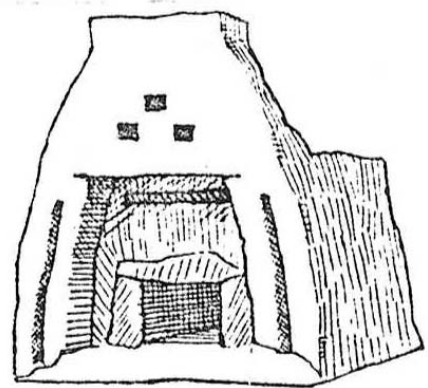
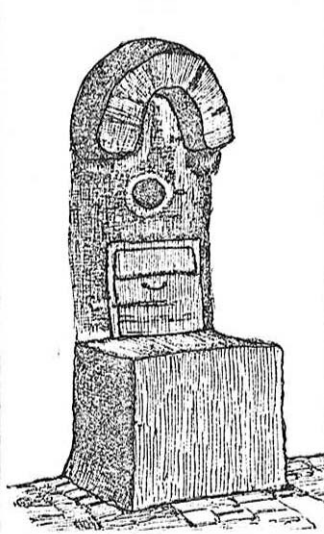
da: Niilo Valonen, Zur  
geschichte der Finnischen  
Wohnstuben, Helsinki, 1963, p.249, fig.23I.





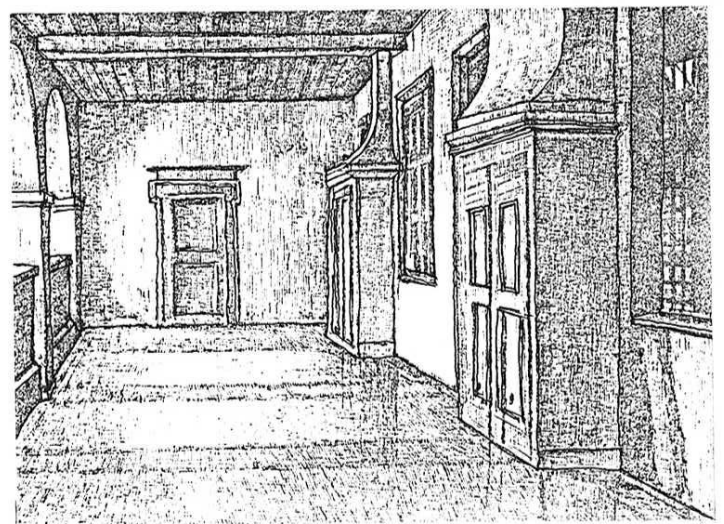
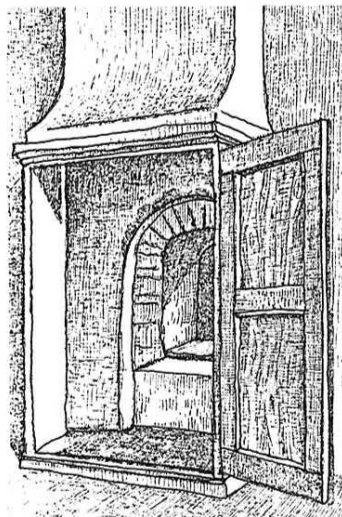
"Bocca" di una stufa,  
casa contadina a Legan,  
Holstein (Germania).

da: Blümer, p.13



Riege (finlandia)  
Rauchofen con cappa  
per le scintille

da: Valonen, p.262, f.249



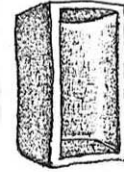
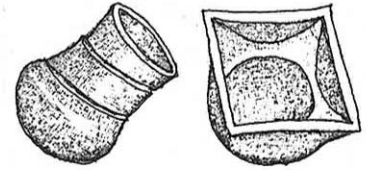
Gli armadi a muro nei quali si aprono le stufe, nella galleria del castello di Trausnitz: uno degli armadi aperto e la galleria.

da: Blümer, pp.20-21

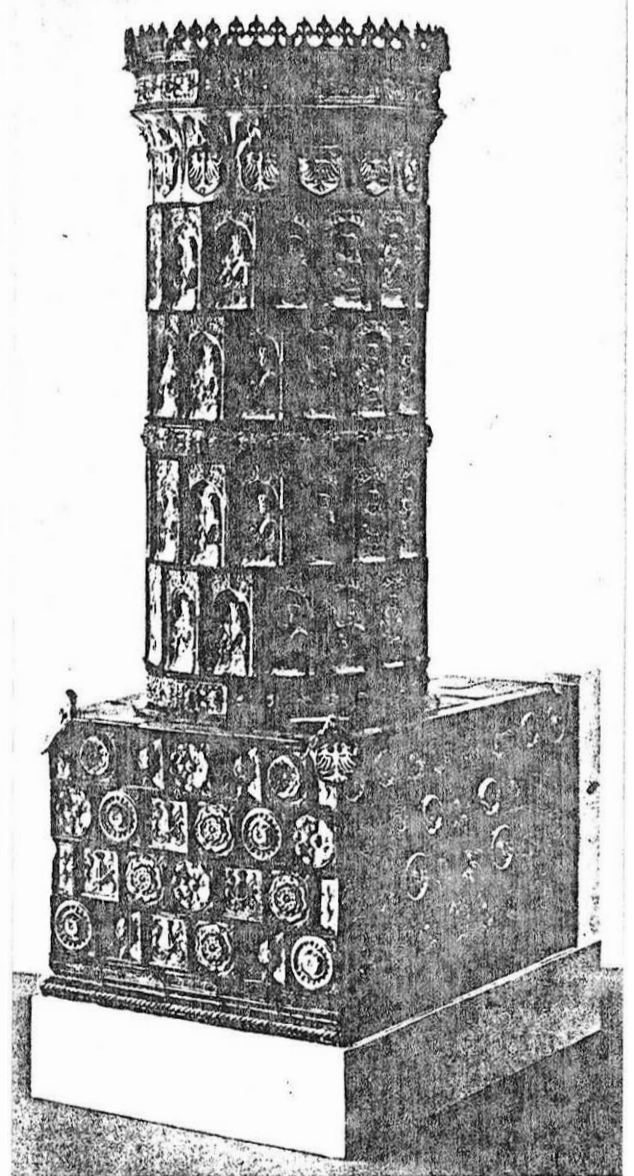


Vari tipi di pannelli  
radianti: a "pignatta",  
a "scodella" e a "nicchia"

da: Blümer, p.12



Stufa-apparecchio  
del castello di  
Wawel a Cracovia  
(ricostruzione)  
XV-XVI secolo.



da: Maria PiatKie  
wicz-Dereniowa